

# MONTHLY MEMBERSHIP PROGRESS REPORT

LOCATION INDIA

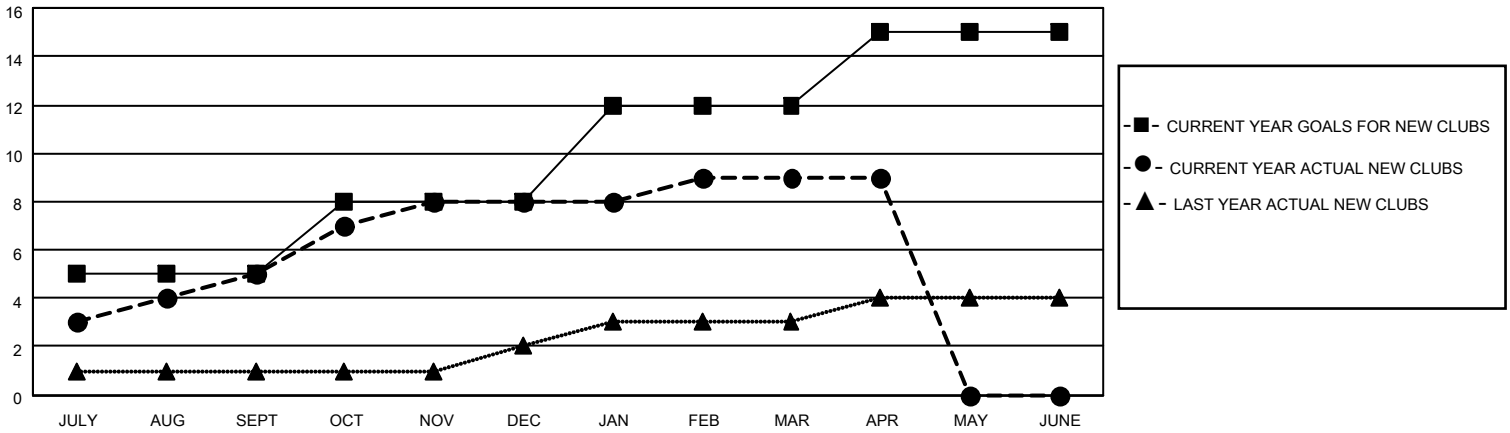
District 317 F

Results as of: 4/30/2022

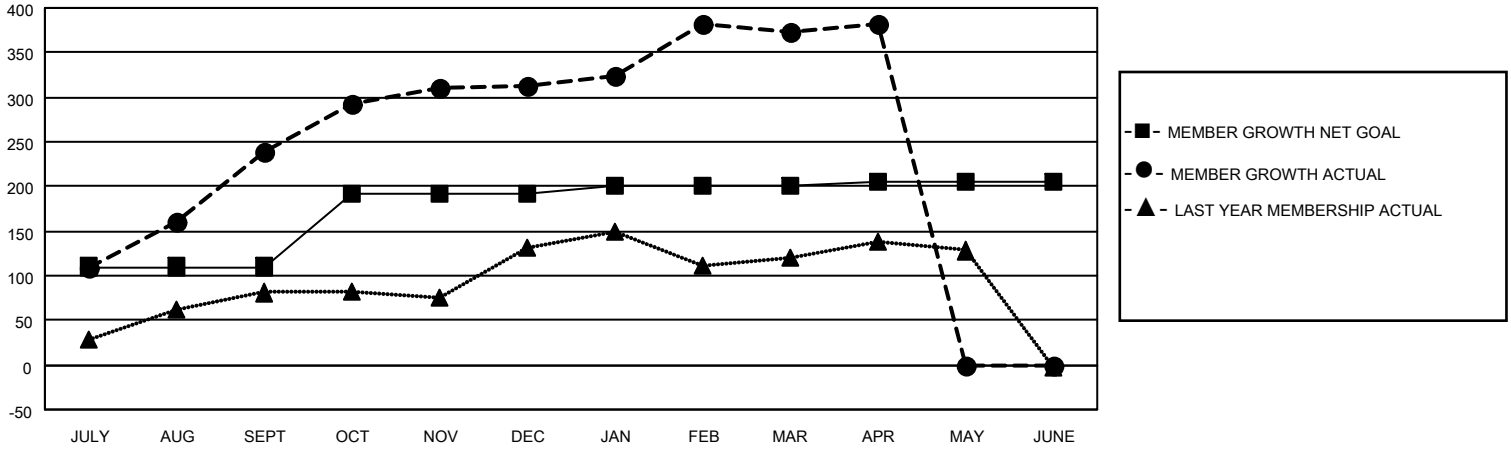
Clubs			
RESULTS FOR 2021-2022			
QUARTER	NEW CLUB GOAL	NEW CLUBS	DROPPED CLUBS
JULY/AUG/SEPT	5	5	2
OCT/NOV/DEC	3	3	0
JAN/FEB/MAR	4	1	1
APR/MAY/JUNE	3	0	0

Members			
RESULTS FOR 2021-2022			
QUARTER	MEMBER GROWTH NET GOAL	MEMBER GROWTH ACTUAL	DROPPED MEMBERS ACTUAL (including transfers)
JULY/AUG/SEPT	110	285	37
OCT/NOV/DEC	81	114	35
JAN/FEB/MAR	10	106	36
APR/MAY/JUNE	5	21	13

**GOALS AND ACTUAL NEW CLUBS CUMULATIVE**



**GOALS AND ACTUAL MEMBERS CUMULATIVE**



**DROPPED CLUBS: 3**

**52 CLUBS OF 73 ADDED 1 OR MORE NEW MEMBERS**

**GENDER DISTRIBUTION**

MALE	1,519 (70.00%)
FEMALE	651 (30.00%)
NON BINARY	0 (0.00%)
PREFER NOT TO ANSWER	0 (0.00%)

**DROPPED MEMBERS**

[CLICK HERE FOR CUMULATIVE MEMBERSHIP DATA](#)

DECEASED	7
CLUB CANCELLED	24
OTHER	90
<b>TOTAL</b>	<b>121</b>

TOTAL FAMILY UNIT MEMBERS 846

FAMILY MEMBERS PAYING HALF DUES 459